

Injection animal electronic chip/ animal syringe chip



A2.12*12

Glass tube biological electronic labels are suitable for animal husbandry animals: cats, dogs, horses, pigs, cattle, sheep, rabbits, mink, foxes, arowana, etc. There are two ways to write. The maximum storage volume is 2Kbits, which adopts the international standards that meet the biochemical medical materials and techniques, production, and the ISO11784/85 international standard. It adopts the currently most advanced biological glass material to effectively prevent swimming and zero rejection of animals. It has been used in large quantities at home and abroad. Effective management and control of animal growth and breeding have been used to track and manage the entire process of animal growth

Product Features :

- Small size and light weight
- Simple injection/implantation
- Use biological glass packaging
- On the surface with non-slip motion materials

Application field:

Cat, dog, lab rat, pet mink, raccoon dog, fox, arowana, salmon, horse, rabbit, pig, cow, sheep, etc.

Certification:

This product has passed the international ICAR certification, in line with ISO11784/11785 communication protocols and standards through the National Centre for Supervision and Inspection of Electronic Label Product Quality, the National Centre for Quality Supervision and Inspection of Electronic Computers, and the Centre for Quality Supervision and Inspection of IC Cards in the Information Industry!

Technical Parameters

Product number	A2.12*12
Packaging material	Medical breathable paper
Frequency	134.2K/125K
Chip size	2.12X12MM
Disinfection method	EO (ethylene oxide) disinfection, valid for five years
Syringe Color	Syringe is white, needle is not removable
Visible info on the package	Sterilization date, expiry date, 15-digit code (in bar code)
Weight	6.5 grams (single chip 0.02 grams)
Chip type	EM4305
Encapsulation Material	Inner:Lead-freeandnon-toxicmaterial,Outer:Bioglass

Installation method:

From the special personnel to use the use of a special injection directly into the epidermis of the animal body, the level of water is 45 ° angle

Implantation



Find the position of the implantation chip (that is, the two shoulder blades pre -back midline)



Use both hands to feel the planting of the chip



Use wine refined cotton to disinfect the skin of the chip's part



Use one hand to hold the skin at the implantation place

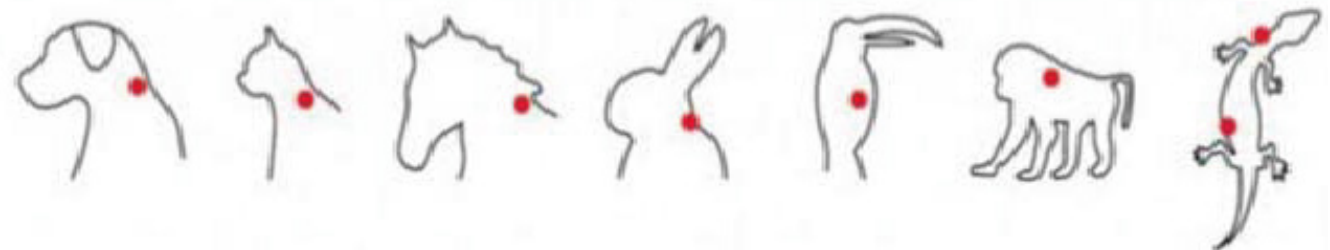


Insert the needle's mouth 45 degrees



Insert the skin into the skin until the shiny position, push the plunger and pull out

Planting rough marks



1: Tiger, Leopard, Lion, Bear, Giant Panda and Red Panda
Centrally subcutaneous on the left side of the neck.

2: Orangutans, gibbons, golden monkeys and langurs
Centrally subcutaneously on the medial left forearm.

3: Elephant

The fold on the left side of the base of the tail is subcutaneous.

4: Wild horses, wild asses

Under the skin near the bristle area in the center of the left side of the neck.

5: Takin

Subcutaneous in the center of the left side of the neck near the base of the ear.

6: Crane, Stork, Swan

Subcutaneously in the front central area of the neck.

7: pet dogs, cats

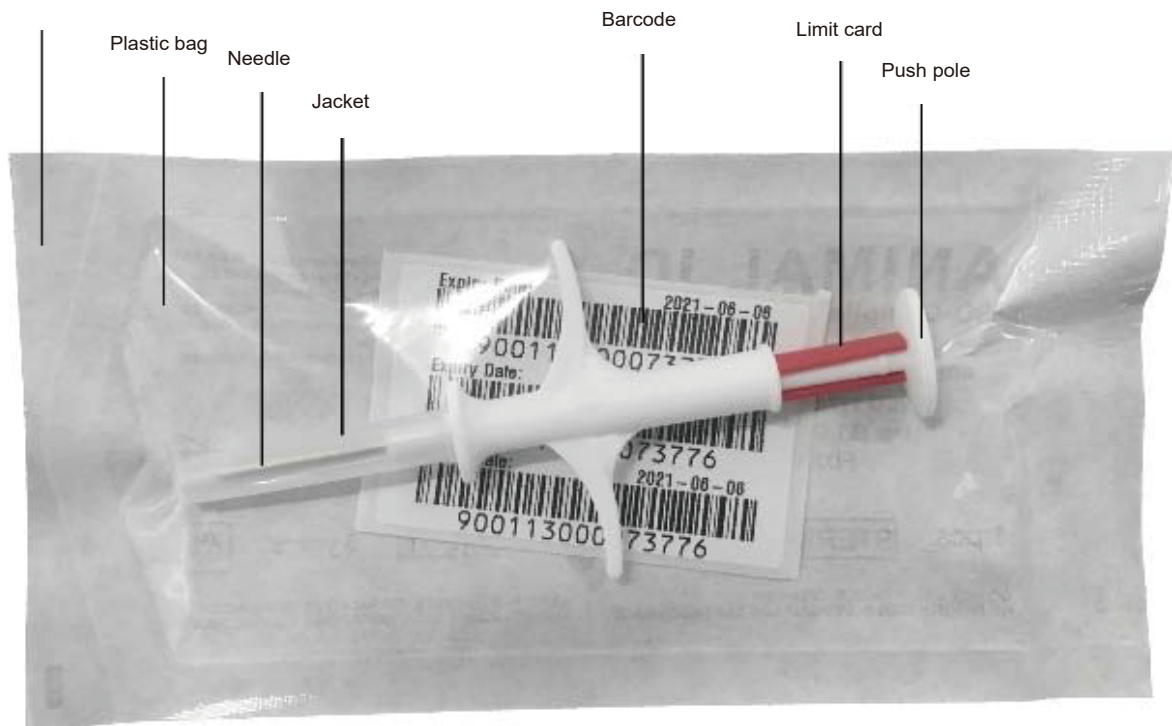
Under the skin at the base of the ear or on both sides of the neck

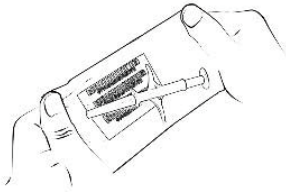
8: Refer to the above for the marking positions of other wild animals with similar morphology.

Beef Cattle Operation Guide

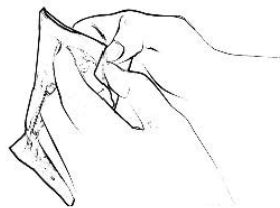
How to use electronic syringes-cows

Paper plastic bag

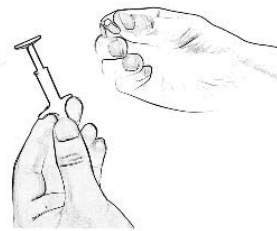




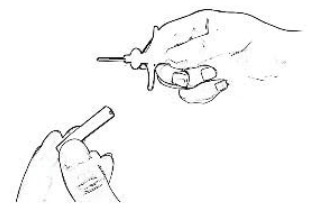
1. Take out the product, observe the packaging without broken damage



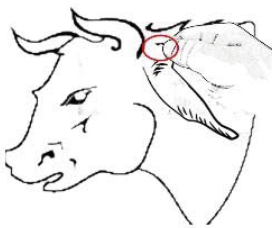
2. Tear the packaging



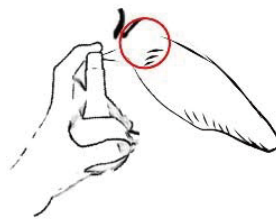
3. Remove the limit card



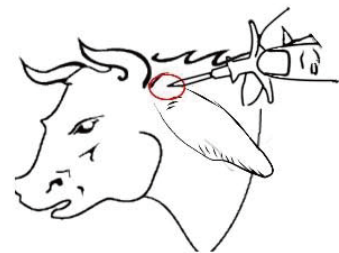
4. Take away the cover and observe the existence of the chip



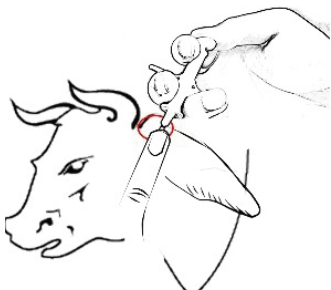
5. Choose the loose position



6. Spray iodine or disinfection potion in the range of 5cm in diameter



7. Insert the skin into the skin, and pay attention to the tip of the needle. Do not insert it to the muscle layer, otherwise the chip will be difficult to inject



8. Press the injection position on the left hand, push the pole to the bottom with the right hand, and when you hear a click, pull out the syringe.



9. Touch the injection position with your hands to confirm that there is a rice granular hard object



10. Scan with PT582, the information and barcode you read correspond



11. Visit a week later